

AUTEL[®] MaxiTPMS[™]



TOOLS CATALOG 2018



| | | | | |
|-----------------|--------------|--------------|----------------|--------------------|
| 1 SENSOR | TS508 | TS608 | MS906TS | MX-TPMS PAD |
| PG.2-3 | PG.4-5 | PG.6-7 | PG.8-9 | PG.10 |

1 SENSOR

PROGRAMMABLE UNIVERSAL SENSORS

- 1-SKU Inventory, 98% Vehicle Coverage
- 315 MHz & 433 MHz Combination
- Interchangeable Valves With Press Release Design
- Less Sensor Weight, Better Performance
- Advanced Technology, Superior Battery Reliability
- Maximum Signal Strength, Wireless Programming
- Tested & Certified to Meet SAE Standards



1 SENSOR LIMITED INVENTORY

315 MHz + 433 MHz

COMBINE BOTH FREQUENCY

98%

VEHICLE
COVERAGE

PRESS RELEASE BUTTON

The exclusive MX-Sensor patented PRESS release valve design, allows rubber and metal valve stems to freely interchange by hand, without a tool for sensor head fitting. The easy to use PRESS release valve design, reduces service time to increase profits.



QUALITY TESTED

MX-Sensors are made with automotive-grade materials to resist corrosion and severe weather conditions. The durable stainless steel release button assembly, the high-precision air valve prevents leaks and automotive grade battery lasts longer. Autel's MX-Sensor valves are tested independently and certified to meet and exceed the SAE industry standard J1205 / J1206 ratings. OE level signal durability and functionality insures only the highest quality sensors are installed.



AUTEL® MaxiTPMS™

MX-SENSOR 1 SENSOR

- MX-SENSOR 1-SENSOR
- 1-SKU INVENTORY, 98% VEHICLE COVERAGE
- 315 MHZ & 433 MHZ COMBINATION
- INTERCHANGEABLE VALVES
- WITH PRESS RELEASE DESIGN
- TESTED & CERTIFIED TO MEET SAE STANDARDS

\$39.95



METAL ACCESSORY VALVE KIT

- SET OF 4 INTERCHANGEABLE VALVE STEMS
- COMPATIBLE WITH PRESS RELEASE MX-SENSORS
- REPLACEMENT PARTS FOR ONE VEHICLE
- TESTED & CERTIFIED TO MEET SAE STANDARDS

\$9.95



RUBBER ACCESSORY VALVE KIT

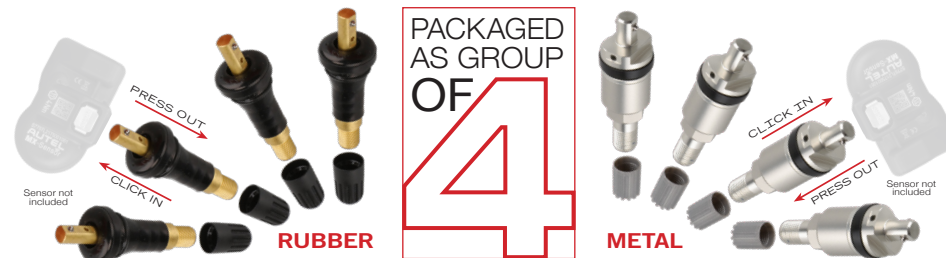
- SET OF 4 INTERCHANGEABLE VALVE STEMS
- COMPATIBLE WITH PRESS RELEASE MX-SENSORS
- REPLACEMENT PARTS FOR ONE VEHICLE
- TESTED & CERTIFIED TO MEET SAE STANDARDS

\$9.95



ACCESSORY VALVE KIT

With both rubber and metal accessory valve stems available, our accessory valve kits minimize service time and provide a quick assembly for installation. Autel MX-Sensor superior stem design allows easy removal from sensor head.



TS508

ADVANCED TPMS SERVICE TOOL

The Autel MaxiTPMS TS508 is a new generation complete TPMS diagnostic tool specially designed to activate all TPMS sensors, read TPMS sensor status, check TPMS system health, program MX-sensors and conduct TPMS relearn. Based on service type needed, the option to choose a Quick or Advanced TPMS service mode will decrease repair time. The TS508K premium kit includes one tool and 8 MX-Sensor 1-Sensors, to offer a perfect solution for quick TPMS service repair.



EASY & FAST: QUICK MODE

In Quick Mode you can activate and relearn all known sensors, read sensor ID, temperature, and pressure, and read battery power level condition. Sensor programming options include copy by activation, copy by manual input, and the newest option to auto create 1-16 sensors.



POWERFUL: ADVANCED MODE

Advanced Mode features the same TPMS options as Quick Mode, plus TPMS Status Screen to view system faults, read and clear DTCs from ECU, and sensor position relearn. Sensor programming options include copy by activation, copy by manual input, the newest option to auto create 1-16 sensors, and copy by OBD.



AUTEL® MaxiTPMS™

OBDII CONNECTOR FOR TPMS DIAGNOSTICS

MAXI TPMS - TS508K

- SAME TS508 TOOL PACKAGED AS KIT
- KIT INCLUDES 8 MX-SENSOR 1-SENSORS

\$795.00

MAXI TPMS - TS508

- QUICK MODE & ADVANCE MODE DIAGNOSTICS
- EXCLUSIVE SINGLE SCREEN TPMS SYSTEM STATUS TO DETECT & DISPLAY TPMS FAULTS
- READ/ACTIVATE/RELEARN ALL KNOWN TPMS SENSORS
- ON-TOOL RELEARN PROCEDURE
- 4 PROGRAMMING OPTIONS
- ADJUST TIRE SIZE PLACARD VALUES
- WIDE OBD COVERAGE

\$595.00

COVERS DOMESTIC, ASIAN AND EUROPEAN VEHICLES (TPMS EQUIPPED)



AUTEL.COM UPDATES PROVIDES THE LATEST TPMS COVERAGE AND DIAGNOSTICS

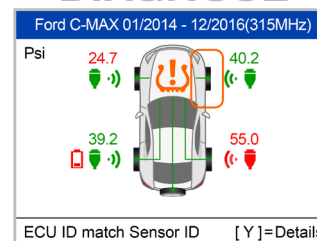
1 YEAR WARRANTY / FREE LIFETIME UPDATES.

REGISTER AND UPDATE TOOLS TO GUARANTEE LATEST VEHICLE COVERAGE

* LIFE OF THE TOOL

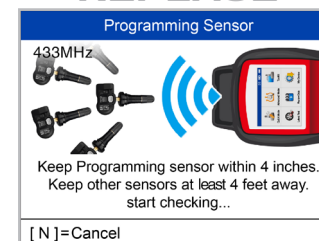
TPMS IN 3 EASY STEPS

DIAGNOSE



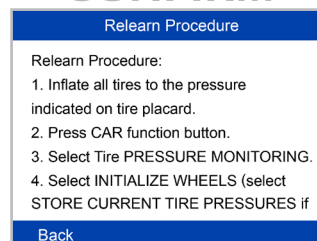
1 CHECK ALL TPMS SENSORS

REPLACE



2 PROGRAM AUTEL MX-SENSORS

CONFIRM



3 ON-TOOL RELEARN PROCEDURE

TS608

COMPLETE TPMS & SERVICE TOOL COMBINATION

An industry first combination of complete TPMS and advanced service functions in a 7-inch tablet scan tool, equipped with the newest VCI mini for wireless communication. Complete repair projects faster with comprehensive TPMS, special service and all systems diagnostics in the same Android-based smooth navigation software as the rest of the MaxiSYS tool line. The MaxiTPMS TS608 provides the highest level of TPMS and service diagnostics setting new standards for service tools.



THREE TOOLS IN ONE

The innovative TS608 combination service tool provides three mode options from the main screen. This quicker tool navigation decreases repair time by providing easier and faster access to a wider variety of tool features, instead of switching between multiple specialty tools to complete projects.

COMPLETE TPMS
DIAGNOSTICS

SPECIAL SERVICE
FEATURES

ALL SYSTEMS
DIAGNOSTICS

BLUETOOTH MAXI-VCI MINI

Latest compact-size Wireless Bluetooth MaxiVCI Mini OBDII connector, transmits vehicle data to the tablet without a physical connection. Enhanced wireless bluetooth connectivity between the tablet and VCI device allows greater service mobility and easier TPMS sensor interaction while the tablet remains connected to the vehicle for data transmission.



AUTEL® MaxiTPMS™

WIRELESS BLUETOOTH OBDII CONNECTOR

MAXI TPMS - TS608

TPMS

- EXCLUSIVE SINGLE SCREEN TPMS SYSTEM STATUS TO DETECT & DISPLAY TPMS FAULTS
- READ/ACTIVATE/RELEARN ALL KNOWN TPMS SENSORS
- ON-TOOL RELEARN PROCEDURE
- 4 PROGRAMMING OPTIONS
- ADJUST TIRE SIZE PLACARD VALUES
- WIDE OBD COVERAGE
- READ/ CLEAR OBDII CODES/ SENSOR INFO
- OBDII INTERFACE TO EXTRACT TPMS CODES

SERVICE

- READ & ERASE TROUBLE CODES
- TEST ABS/ SRS/ EPB/ DPF
- OIL & SERVICE RESETS/ BATTERY REGISTRATION
- SET INSPECTION 1&2 SERVICE INTERVALS
- VIEW & GRAPH LIVE FREEZE FRAME DATA
- TEST: O₂ MONITOR, ON-BOARD MONITOR, COMPONENT & I/M READINESS

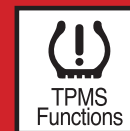
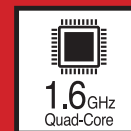
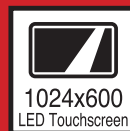
DIAGNOSTIC

- READ/ CLEAR CODES FOR ALL MODULES
- SUPPORTS ALL 10 OBDII TEST MODES
- OPEN & CLOSE EPB
- DIAGNOSE EPB/SBC CALIPER FUNCTIONALITY
- RESET STEERING ANGLE SENSORS (SAS)



\$995.00

COVERS DOMESTIC, ASIAN AND EUROPEAN VEHICLES (1996 TO PRESENT)

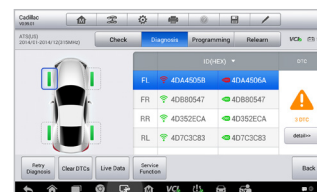


AUTEL.COM UPDATES PROVIDES THE LATEST TPMS COVERAGE AND DIAGNOSTICS

1 YEAR WARRANTY / 1 YEAR FREE SOFTWARE UPDATES

REGISTER AND UPDATE TOOLS UPON PURCHASE TO GUARANTEE LATEST VEHICLE COVERAGE

COMPLETE TPMS DIAGNOSTICS

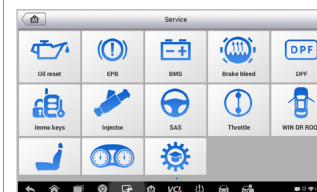


- OBDII Connection To Read & Clear Codes
- Detect & Display TPMS System Faults
- Activate & Relearn All Known Sensors
- Read Sensor ID Info & Battery Power Level
- Sensor Position Relearn Assist Procedure

4 SENSOR PROGRAM OPTIONS

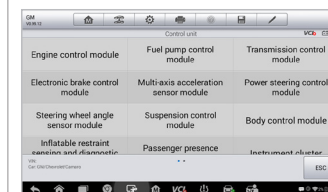
- Copy by Activation
- Copy by Manual Input
- Auto Create 1-16 Sensors
- Copy by OBD

ADVANCED SERVICE FEATURES



- Read & Clear Codes (Generic & Manufacturer, Pending and Stored)
- Control & Test ABS/ SRS/ EPB/ DPF Groups
- Diesel Particulate Filter Service
- Oil & Service Resets/ Battery Registration
- Set Inspection 1 & 2 Service Intervals
- View and Graph Live Freeze Frame Data
- Perform O₂ Monitor, On-Board Monitor, I/M Readiness and Component Testing

ALL SYSTEMS DIAGNOSTICS



- Read & Clear Codes For All Module Systems
- Powertrain, Body, Chassis, Communication
- Supports All 10 OBDII Test Modes - Freeze Frame, Enhanced Mode 6, I/M Readiness, Vehicle Information & Component Tests
- Open & Close EPB Pads For Service
- Diagnose EPB/SBC Caliper Functionality
- Reset Steering Angle Sensors (SAS)

MS906TS

AFFORDABLE SCAN TABLET + TPMS DIAGNOSTICS

NEXT GENERATION TPMS



WHY BUY A SECONDARY TPMS TOOL?

TPMS EVOLUTION

The MaxiSys MS906TS is an ALL-IN-ONE industry first, combining advanced diagnostics with complete TPMS functionality. Now technicians don't need multiple devices to trigger, program, or relearn Autel MX-Sensor 1-Sensors with one ultra-fast, lightweight, wireless, touch screen scan tablet.

EMBEDDED TPMS ANTENNA

Combining next generation hardware with powerful software for the price conscious technician that requires advanced-level diagnostics to scan all vehicle systems and quickly perform complete TPMS diagnostics or sensor programming.

AUTEL MAXISYS™

BUILT-IN COMPLETE TPMS FUNCTIONALITY

MAXISYS - MS906TS

TPMS

- EXCLUSIVE SINGLE SCREEN TPMS SYSTEM STATUS TO DETECT & DISPLAY TPMS FAULTS
- READ/ACTIVATE/RELEARN ALL KNOWN TPMS SENSORS
- ON-TOOL RELEARN PROCEDURE
- 4 PROGRAMMING OPTIONS
- ADJUST TIRE SIZE PLACARD VALUES
- WIDE OBD COVERAGE
- READ/ CLEAR OBDII CODES/ SENSOR INFO
- OBDII INTERFACE TO EXTRACT TPMS CODES

DIAGNOSTICS

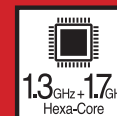
- COVERS DOMESTIC, ASIAN AND EUROPEAN VEHICLE MANUFACTURERS (1996 TO PRESENT)
- AUTOVIN/ AUTOSCAN
- ACCESS REPAIR RECORDS & TEST DATA
- KEY PROGRAMMING DOMESTIC & ASIAN 1996+
- SERVICE RESET FEATURES
- ACCESS ALL MODULES IN ALL SYSTEMS



\$2195.00

- BI-DIRECTIONAL CONTROL
- ADVANCED CODING AND ADAPTATIONS
- ON-TOOL RELEARN PROCEDURES

COVERS DOMESTIC, ASIAN AND EUROPEAN VEHICLES (1996 TO PRESENT)

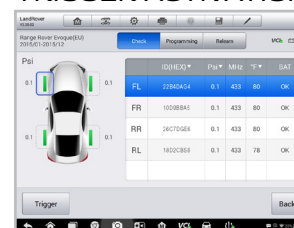


AUTEL.COM UPDATES PROVIDES THE LATEST TPMS COVERAGE AND DIAGNOSTICS

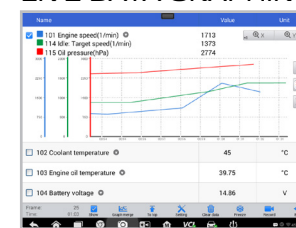
1 YEAR WARRANTY / 1 YEAR FREE SOFTWARE UPDATES

REGISTER AND UPDATE TOOLS UPON PURCHASE TO GUARANTEE LATEST VEHICLE COVERAGE

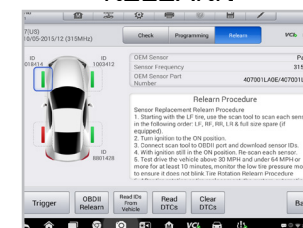
TRIGGER ACTIVATION



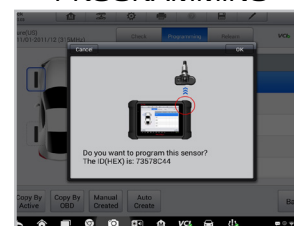
LIVE DATA GRAPHING



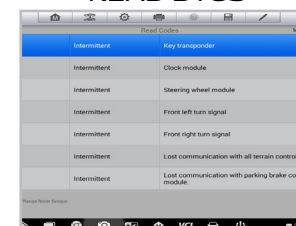
MX-SENSOR RELEARN



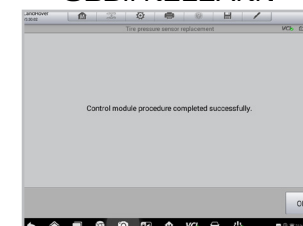
MX-SENSOR PROGRAMMING



READ DTCS



OBDII RELEARN



MX-TPMS PAD

MX-SENSOR PROGRAMMING ACCESSORY DEVICE

The MX-TPMS programming accessory device (PAD) is the perfect tool for busy shops. It frees up your TPMS activation tools for important projects. When attached to your Windows based computer, the easy-to-use MX-TPMS PAD can test and clone Autel MX-Sensors quickly. Simply place the sensor on the top of the MX-TPMS PAD for efficient multi-sensor programming.

THREE SIMPLE STEPS TO PROGRAM AUTEL MX-SENSORS:

1. Install the MX-TPMS PAD software on your PC
2. Connect the MX-TPMS PAD to your PC
3. Program Autel MX-Sensor 1-Sensors

\$99.95



COMPONENT KIT

RUBBER & METAL MX-SENSOR COMPONENT KIT

The Autel MX-Sensor Component Kit includes a complete list of individual parts needed to service and replace existing rubber and metal valve stem Autel MX-Sensor 1-Sensors.



\$59.95

| | | | |
|---------------------------------------|----------|-----------------------------------------------|----------|
| Metal Valve Component Kit - Screw Nut | 2x10 pcs | Rubber Valve Component Kit - Cap | 2x10 pcs |
| Metal Valve Component Kit - Washer | 2x10 pcs | Metal/Rubber Valve Component Kit - Valve Core | 2x10 pcs |
| Metal Valve Component Kit - Screw Nut | 2x10 pcs | Rubber Valve | 4x1 pcs |
| Metal Valve Component Kit - Cap | 2x10 pcs | Metal Valve | 4x1 pcs |

1-SENSOR

BULK QUANTITY ADVANCED TPMS SENSORS

The 1-Sensor 20-Pack contains a quantity of 20 MX-Sensor 1-Sensors with rubber valve stems. The rubber stems are easily interchangeable with our metal valve stems (sold separately).

1-SENSOR 20-PACK

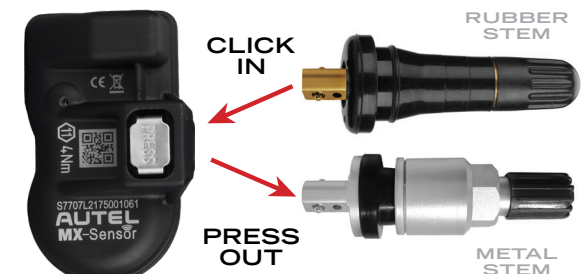


- 20 MX-SENSOR 1-SENSORS WITH RUBBER VALVE STEMS

PART# 1SENSOR20PACK



PRESS RUBBER / METAL INTERCHANGEABLE VALVE STEMS



AUTEL®

AUTOMOTIVE INTELLIGENCE

1 SENSOR

TS508

TS608

MS906TS

MX-TPMS PAD

LIMITED WARRANTY

Dated sales receipt or invoice must be provided to honor Autel warranty

STANDARD POLICY

Autel warrants to the original end-user customer that its products are free from defects in material and workmanship for a specified period of time depending on product. Autel, at its discretion, either repair or replace warranted products. Replaced products will either be new or recertified. All recertified products will be tested to ensure their hardware and software are functionally equivalent to new products. Do not open Autel products. Opening an Autel product may cause damage to the tool that is not covered by this limited warranty. Only Autel should service Autel tools. This limited warranty covers only repair or replacement of Autel products, it does not cover any damages or losses of any kind resulting from use or misuse of product.

The limited warranty covers only device failure. It does not cover any damage to the product (including but not limited to cracked screen, broken case, chemical exposure or liquid damage) as a result of accident, abuse, misuse, natural disaster, insufficient or excessive electrical supply, abnormal mechanical or environmental conditions or unauthorized disassembly, repair or modification. This warranty does not apply to consumable parts, such as batteries or protective coatings that are designed to diminish over time, unless failure has occurred due to a defect in materials or workmanship. This limited warranty shall not apply if the product was not used in accordance with accompanying instructions or intended use. This limited warranty does not apply to any product with an altered or removed original identification number or if Autel receives information from relevant public authorities that the product has been stolen.

There is no service charge if the tool is covered under the limited warranty or if the warranty has been extended under the Autel Total Care Program (TCP). Refer to the Autel MaxiSYS Support page for details on replacement part coverage under initial year warranty and TCP extended warranty. Autel can replace batteries on out-of-warranty tools for a service fee. Contact Autel Technical Support to request a Return Goods Authorization (RGA) number to send the tool for battery replacement.

SERVICE PROCEDURE

A defective product may be returned to Autel only after obtaining a Return Goods Authorization (RGA) number from Autel. If any customer has questions or believes it necessary to return the tool for repair, contact your local distributor or Autel technical support to obtain an RGA number and instructions to send the tool to an Autel RGA department for service. The end-user is responsible for the cost of insuring and shipping to Autel. Tools must be properly packaged to prevent damage during transit. Autel will cover shipping cost of the repaired or replacement tool with the same delivery speed by which it was sent in to Autel. The Autel RGA number must be prominently displayed on the outside of the package. Shipments received by Autel without the RGA number prominently displayed on the package exterior will be returned unopened. Autel can not guarantee the security of a unit that is shipped without an Autel-issued RGA.

1 YEAR WARRANTY

The following tools and accessories are covered under Autel Limited Warranty for **ONE YEAR** from date of tool purchase. (MX-Sensors are covered from the date of purchase, for 24-months or a distance of 24,000 miles, whichever comes first.)

• **MaxiTPMS TS508** • **MaxiTPMS TS508K** • **MaxiTPMS TS608** • **MaxiSYS MS906TS**

FREE SOFTWARE UPDATES

The following tools are eligible for free software updates for **ONE YEAR** from date of tool registration.

• **MaxiTPMS TS608** • **MaxiSYS MS906TS**

The following tools are eligible for free software updates for the **LIFETIME OF THE TOOL** from date of tool registration.

• **MaxiTPMS TS508** • **MaxiTPMS TS508K**

(Refer to Autel Update Instructions for details on how to register your tool or contact technical support.)

(Refer to the Autel MaxiSYS Support page for details on purchasing an additional one-year Total Care Program (TCP) card for a more cost effective replacement coverage of damaged MaxiSYS tools after the initial warranty year expires.)

Autel North America

Email: ussupport@autel.com
175 Central Ave, Suite 200,
Farmingdale, NY 11735
United States

Autel South America

Email: latpsupport@autel.com
Office 103, Building 3845,
International Business Park,
Veracruz, Panamá Pacífico, Panamá

Autel China HQ

Email: support@autel.com
6th-10th floor, Bldg. B1, Zhiyuan,
1001 Xueyuan Rd, Xili, Nanshan,
Shenzhen, 518055, China

Autel Europe

Email: support.eu@autel.com
Robert-Bosch-Strasse 25
63225, Langen
Germany

Autel Australia

Email: sales@autel.com.au
155 Islington Street, Melbourne,
Collingwood, VIC 3066
Australia



www.maxitpms.com (855) 288-3587 www.autel.com

© 2017 Autel Intelligent Technology Corp., Ltd. All Rights Reserved
Tools must be registered and updated to be guaranteed the latest coverage.

